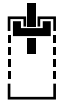
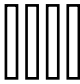




SAS500



A rectilinear baffle system offering acoustic performance in exposed soffit interiors.

SYSTEM GROUP	SUSPENSION METHOD
 Baffle	Suspended from primary grid, threaded rod or cable hangers

TILE	
 Enclosed baffle	 Square edge

ACOUSTICS	
0.7 - 1.0 NRC	N/A Dnfw*

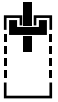
ACCESS	SYSTEM WEIGHT	LIFE EXPECTANCY
Baffles are open systems	3.8lbs/ft + Grid	25yr
	Based on nominal 4ft baffle	In excess of

*Note SAS products are tested in accordance with UK standard Dnfw this means CAC will be 2-2.5dB greater. For more information, please see page 19.

SAS PLUS

HAVE A QUESTION?

Configurable with other products. Call us. Contact us on enquiries@sasint.us



SAS500 acoustic baffles offer a visually engaging alternative to suspended acoustic ceiling systems, ideal for exposed soffit areas. Baffles offer good sound absorption, effectively controlling reverberation within these highly sound reflective interiors. Available in numerous colors and sizes, the baffles can be suspended at a range of heights for further visual interest.

Baffle Sizes

Baffles can come in a variety of lengths and depth, minimum 4 inches maximum 18 inches. Bespoke baffle sizes and shapes are also available on request.

Note Individual baffles are supplied assembled ready for installation on-site.

Linear baffles intended for long continuous runs are supplied loose for on-site assembly.

Finishes

SAS500 is available in all standard SAS finishes, please refer to page 110. Bespoke finishes are available on request.

Perforations

SAS500 can be manufactured with any standard SAS perforation. For our full range of perforations, please refer to page 84. Bespoke perforations are also an option.

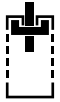
Acoustic Materials

Acoustic mineral wool pad with black tissue face. Other acoustic materials are available, please refer to page 17.

Technical Support

Please contact our technical team for all questions relating to access, security, bespoke features, acoustics, service integration or load support.

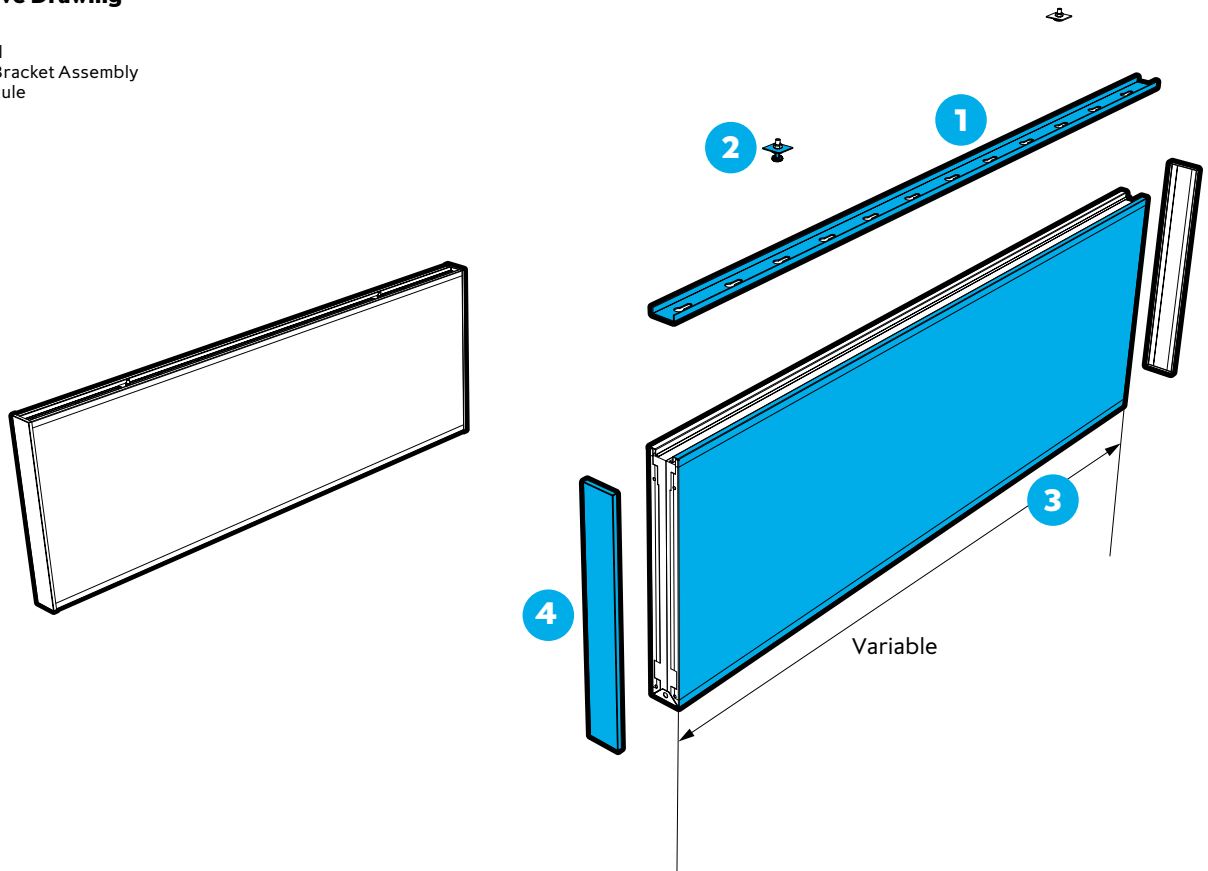
SAS500 | Modular



Perspective Drawing

Linear

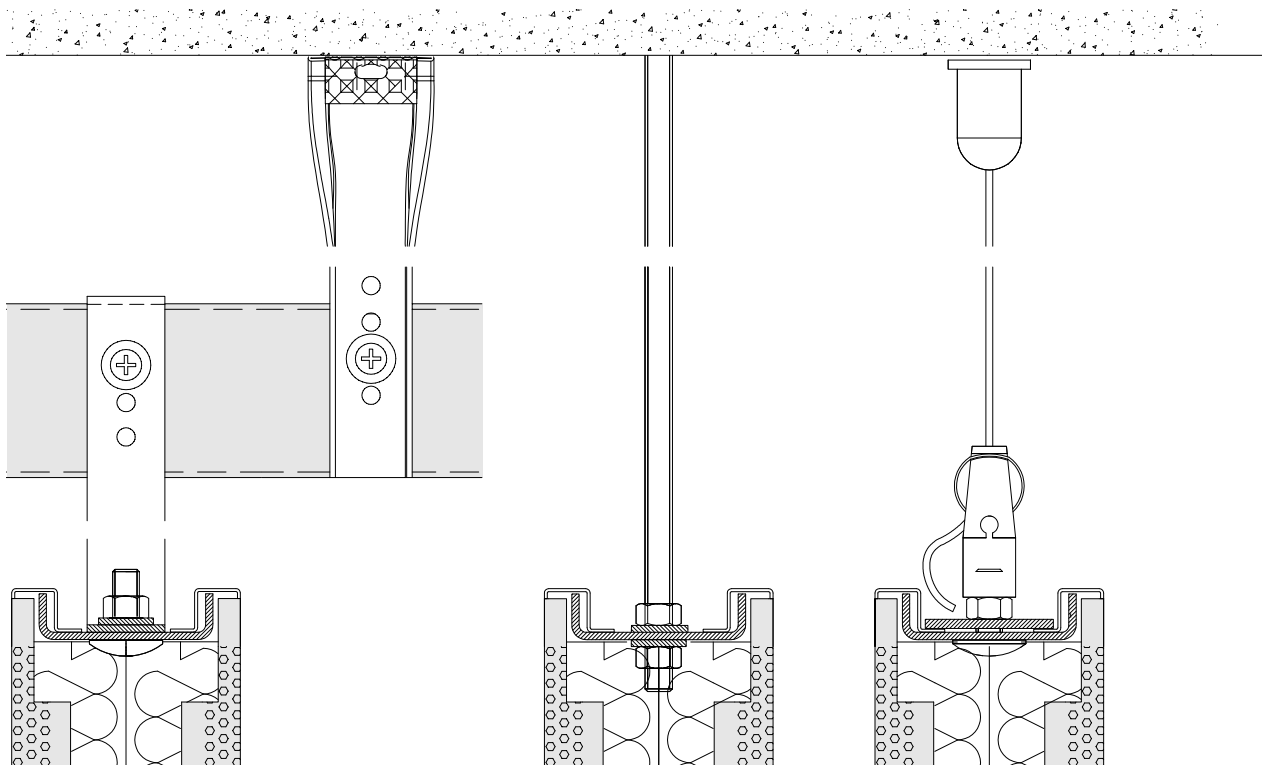
- 1 Carrier Rail
- 2 Clamping Bracket Assembly
- 3 Baffle Module
- 4 End Cap



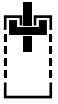
Grid Hanging

Threaded Rod Hanger

Cable Hanging



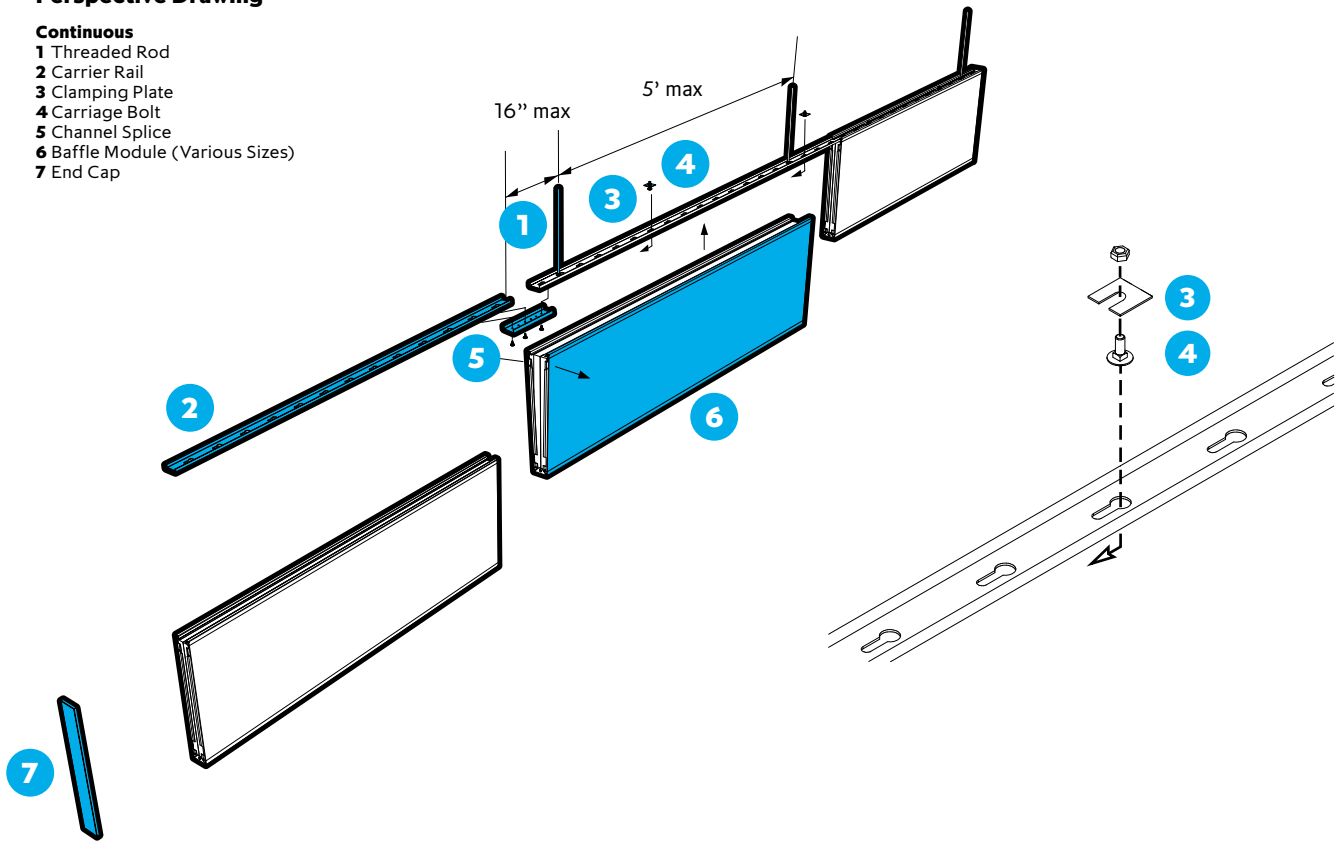
SAS500 | Continuous



Perspective Drawing

Continuous

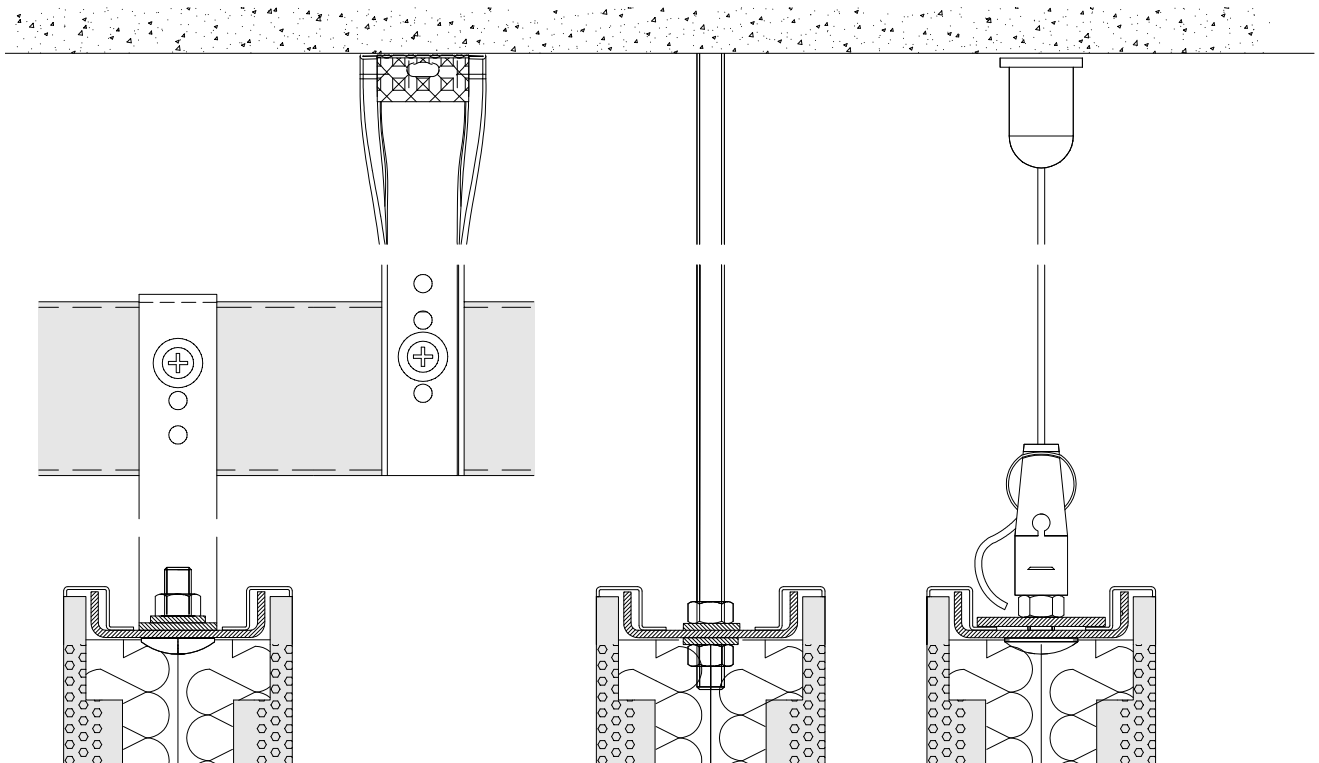
- 1 Threaded Rod
- 2 Carrier Rail
- 3 Clamping Plate
- 4 Carriage Bolt
- 5 Channel Splice
- 6 Baffle Module (Various Sizes)
- 7 End Cap



Grid Hanging

Threaded Rod Hanger

Cable Hanging



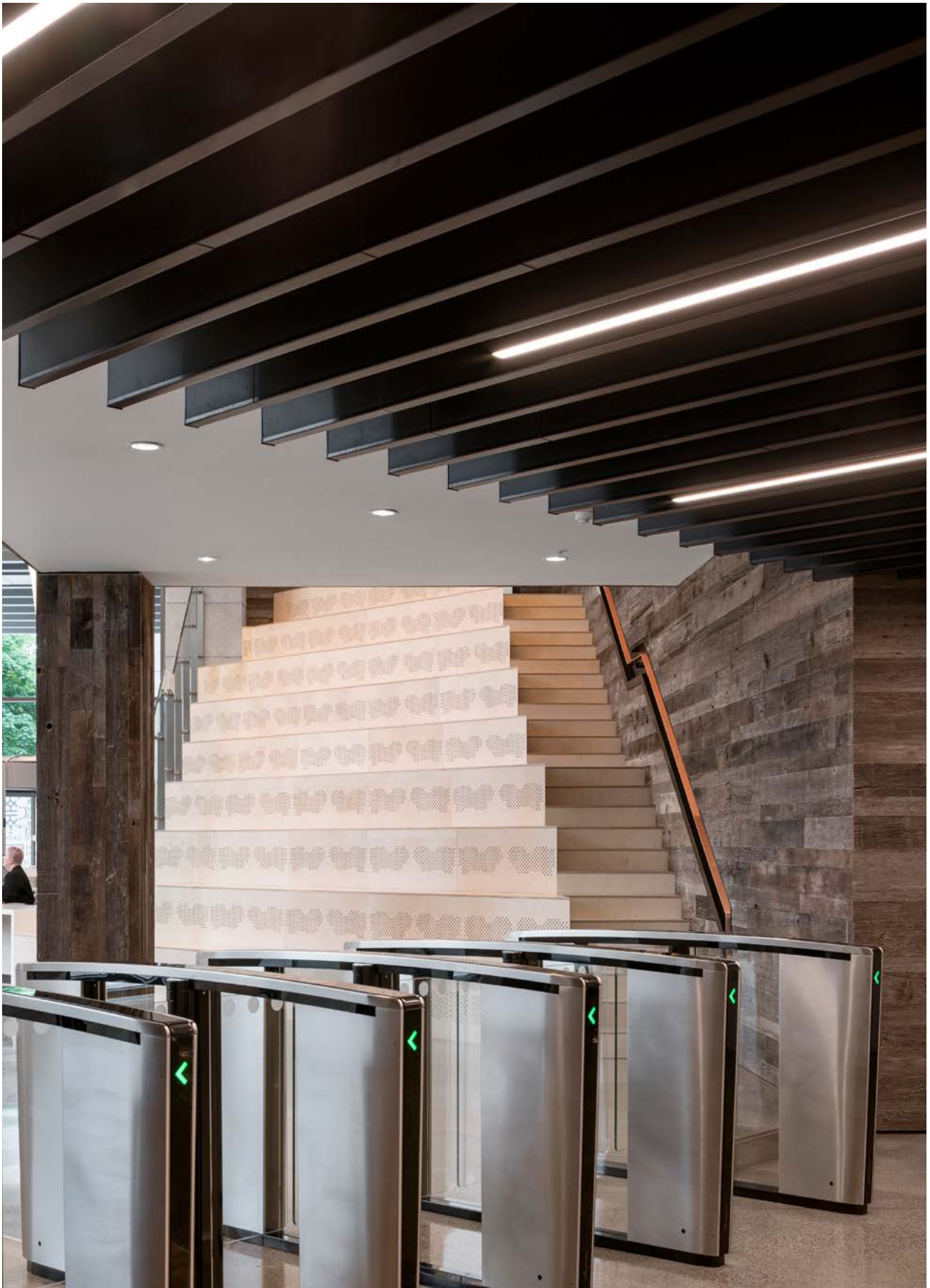


SAS**500**

Lendlease, Barangaroo

Location
Sydney, Australia
Architect
**Hassell Studio
Sydney**

Contractor
Lendlease
Purpose
Commercial



SAS**500**

LinkedIn EMEA HQ

Location
Dublin, Ireland
Architect
RKD Architects

Contractor
Walls Construction
Purpose
Commercial