


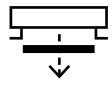


SAS720



A robust linear plank ceiling system suitable for service integration as an integral design feature.

SYSTEM GROUP		GRID			
		Notched EMAC grid EMAC Hanger suspension			
Linear profile ceiling					
PROFILE		MATERIAL			
		Steel			
Plank C-Profile					
APPLICATION		END CAPS			
Interior and exterior					
ACCESS		SYSTEM WEIGHT		LIFE EXPECTANCY	
		0.6lbs/ft + Grid		25yr	
Full – demountable profiles				In excess of	

SAS **PLUS**

HAVE A QUESTION?

Configurable with other products. Call us.
Contact us on enquiries@sasint.us



SAS720 is a linear ‘plank’ system, available in a variety of widths and depths depending on aesthetic preference. Highly robust and sturdy, SAS720 is suitable for service integration as an integral design feature, offering significant creative flexibility.

SAS720 comprises steel rolled c-profiles which hook over the carrier. Costs can be controlled through wider profile spacing if required.

Profile Sizes

Length	10'
Width	2" - 12"

Bespoke profiles sizes and waveform profiles are available on request. Longer continuous runs can be achieved through splices and profiles are secured using barbed edge clips located at the end of profiles.

Access

SAS720 profiles can simply be demounted for void access.

Finishes

SAS720 is available in all standard SAS finishes, please refer to page 110. Bespoke finishes are available on request.

Service Integration

SAS720 profiles can be formed with apertures during manufacturing for integration with lights and other services.

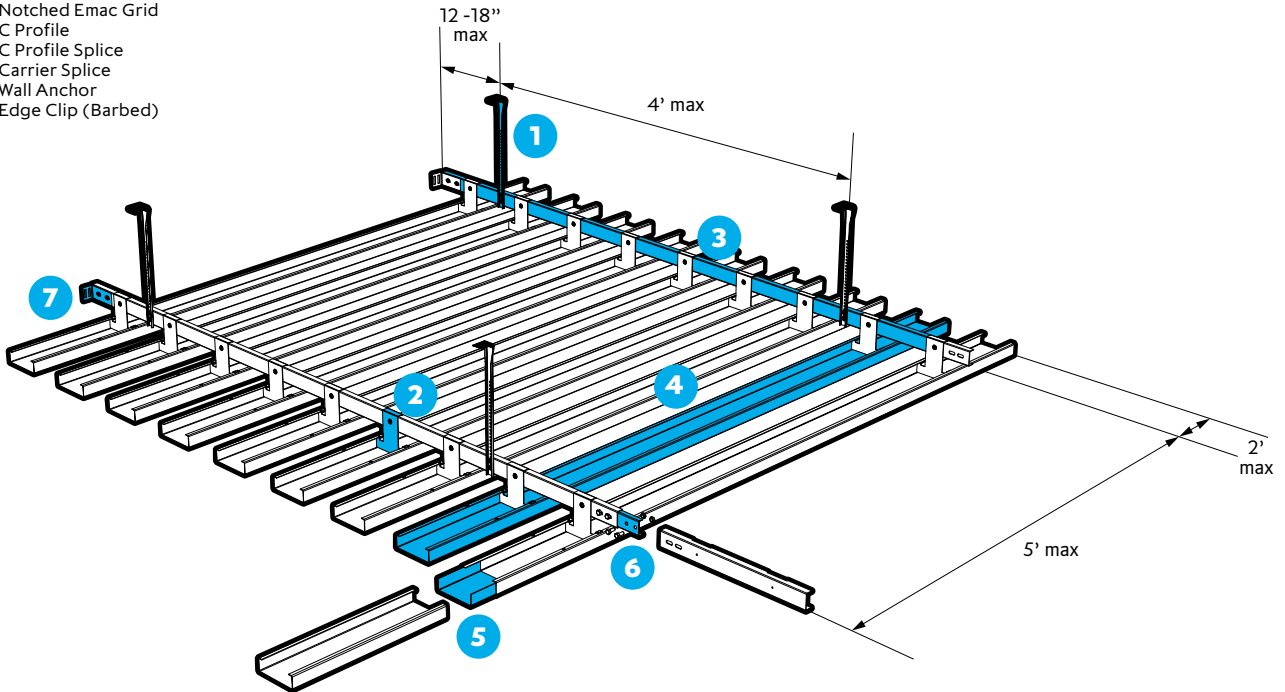
Technical Support

Please contact our technical team for all questions relating to access, bespoke features and service integration.

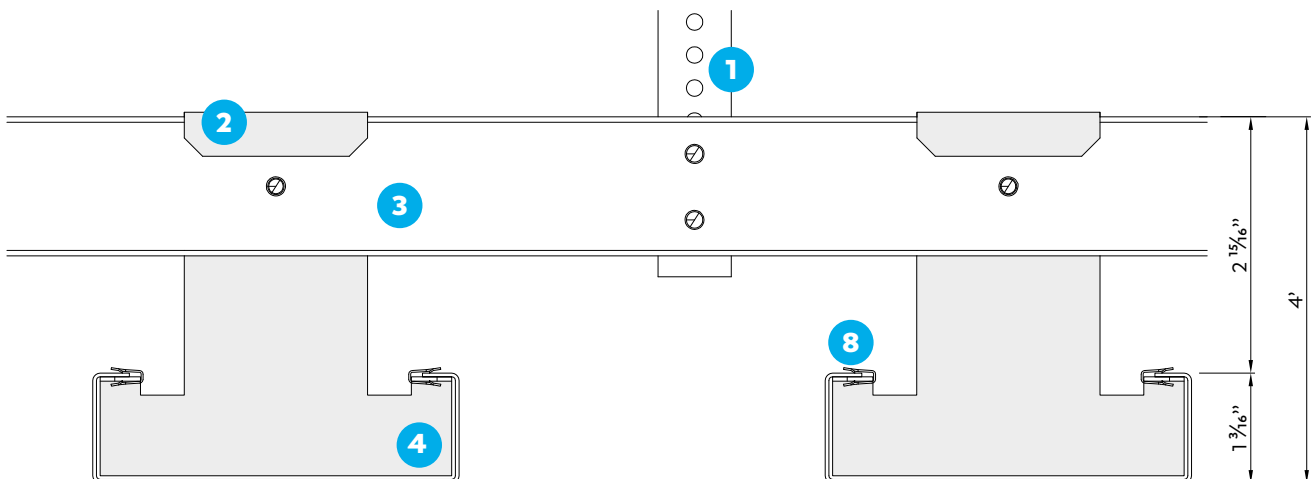


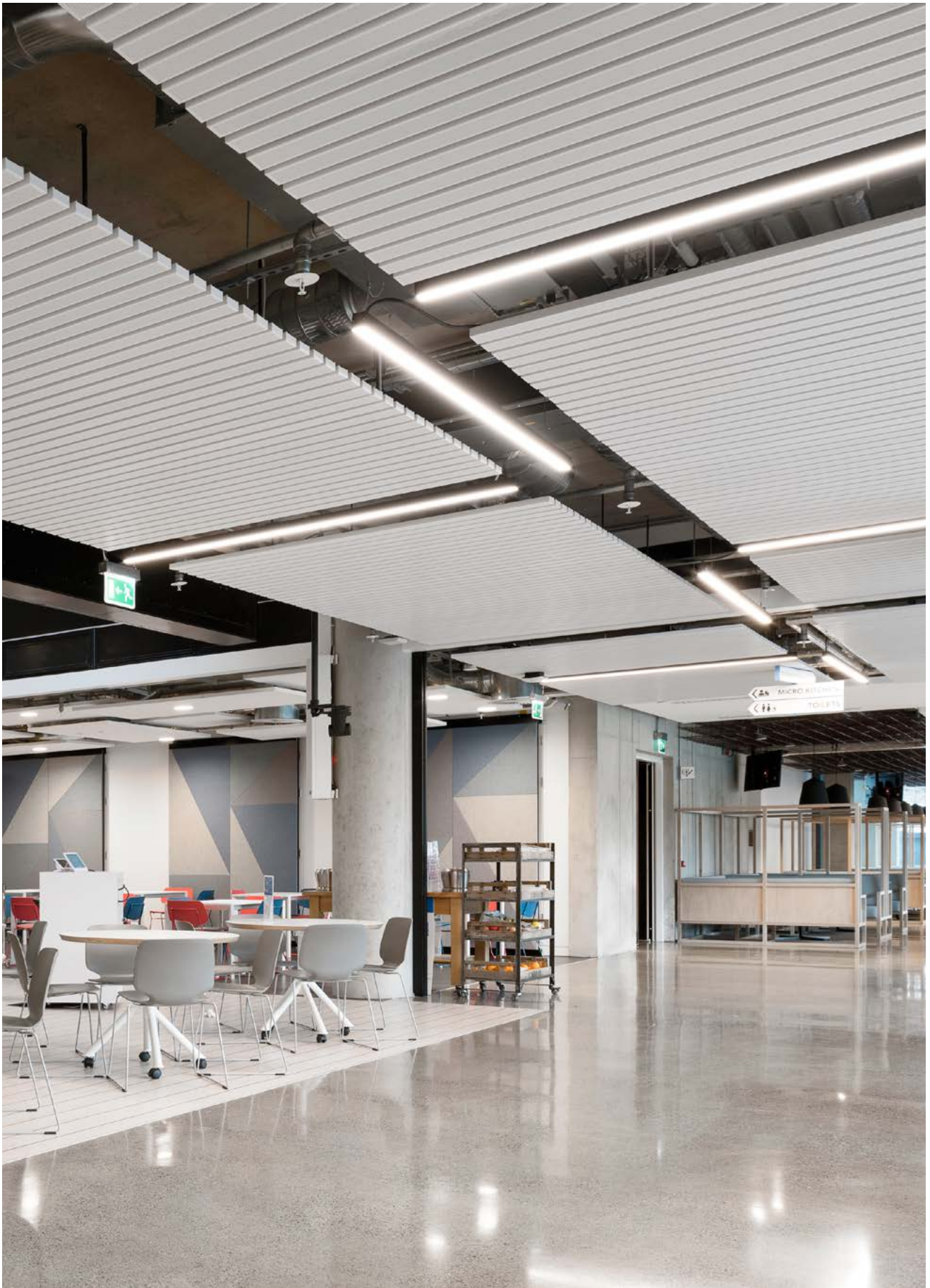
Perspective Drawing

- 1 Emac Hanger
- 2 SAS720 C Profile Bracket
- 3 Notched Emac Grid
- 4 C Profile
- 5 C Profile Splice
- 6 Carrier Splice
- 7 Wall Anchor
- 8 Edge Clip (Barbed)



Section Drawing





SAS720

LinkedIn EMEA HQ

Location
Dublin, Ireland
Architect
RKD Architects

Contractor
Walls Construction
Purpose
Commercial