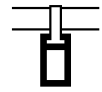


SAS740



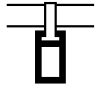
A premium linear profile ceiling, offering enhanced aesthetics, void access, service integration and acoustic performance.

SYSTEM GROUP		GRID
		EMAC grid EMAC Hanger suspension
Linear profile ceiling		
PROFILE	MATERIAL	
	Aluminum	
Bolt-on rectilinear – as standard		
ACOUSTICS	APPLICATION	END CAPS
0.65 - 1 NRC	Interior and exterior	✓
ACCESS	SYSTEM WEIGHT	LIFE EXPECTANCY
Full void access	0.7-1.2 lbs/ft + Grid	25yr In excess of

SAS **PLUS**

HAVE A QUESTION?

Configurable with other products. Call us.
Contact us on enquiries@sasint.us



SAS740 is the most versatile of SAS' linear ceilings, able to accommodate complex geometry and void access. Unlike other continuous linear profile systems, SAS740 can intersperse with acoustic infill panels.

The aluminum system is suitable for spaces requiring a premium aesthetic alternative to suspended tile or open cell ceilings.

Profile Sizes

Length	10'
--------	-----

SAS740 can accommodate a wide range of bespoke profile shapes, sizes and waveform profiles, all available on request. Longer continuous runs can be achieved through splices.

Access

Void access can be achieved through demounting profiles or access panels.

Finishes

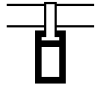
SAS740 is available in all standard SAS finishes, please refer to page 110. Bespoke finishes are available on request, including polished and anodised.

Acoustic Materials

SAS740 can be specified with acoustic tiles in between linear profiles containing an acoustic mineral wool pad with black tissue face, foil back and sides. Typically supplied in RAL 9005 black PPC as standard. Other acoustic materials are available, please refer to page 17.

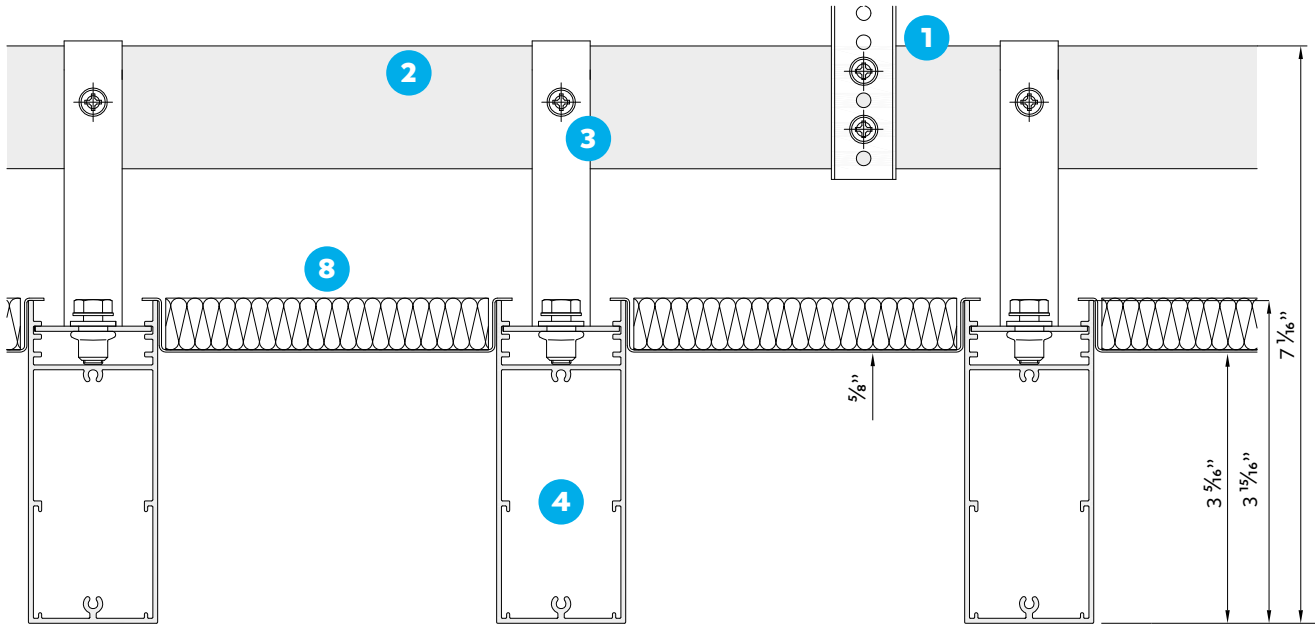
Technical Support

Please contact our technical team for all questions relating to access, bespoke features and service integration.

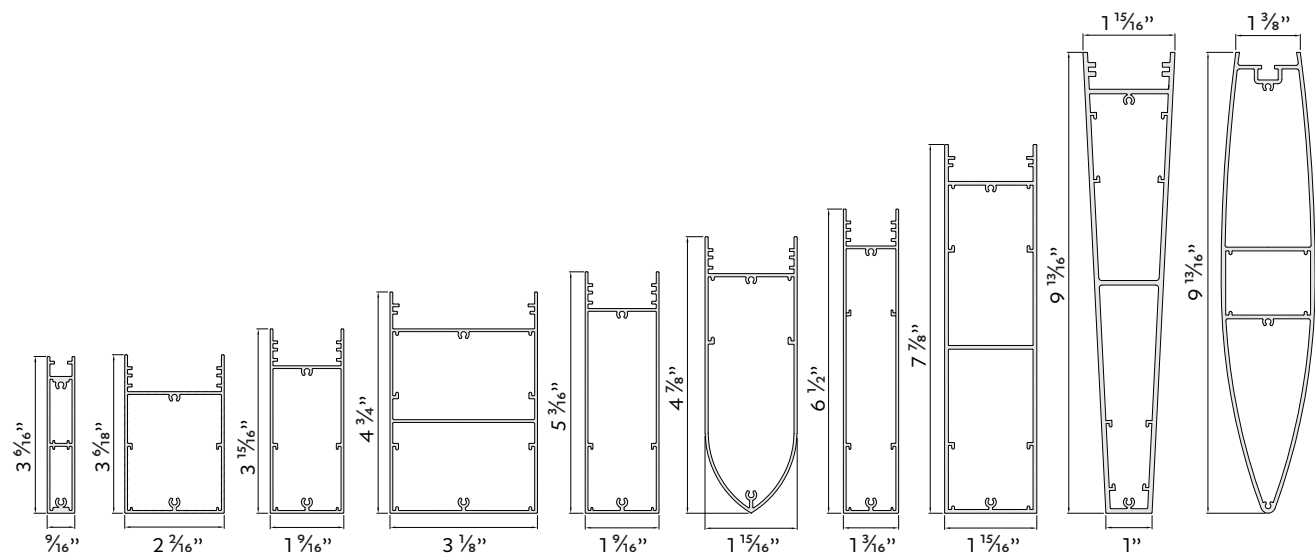


Section Drawing – Hanger Long

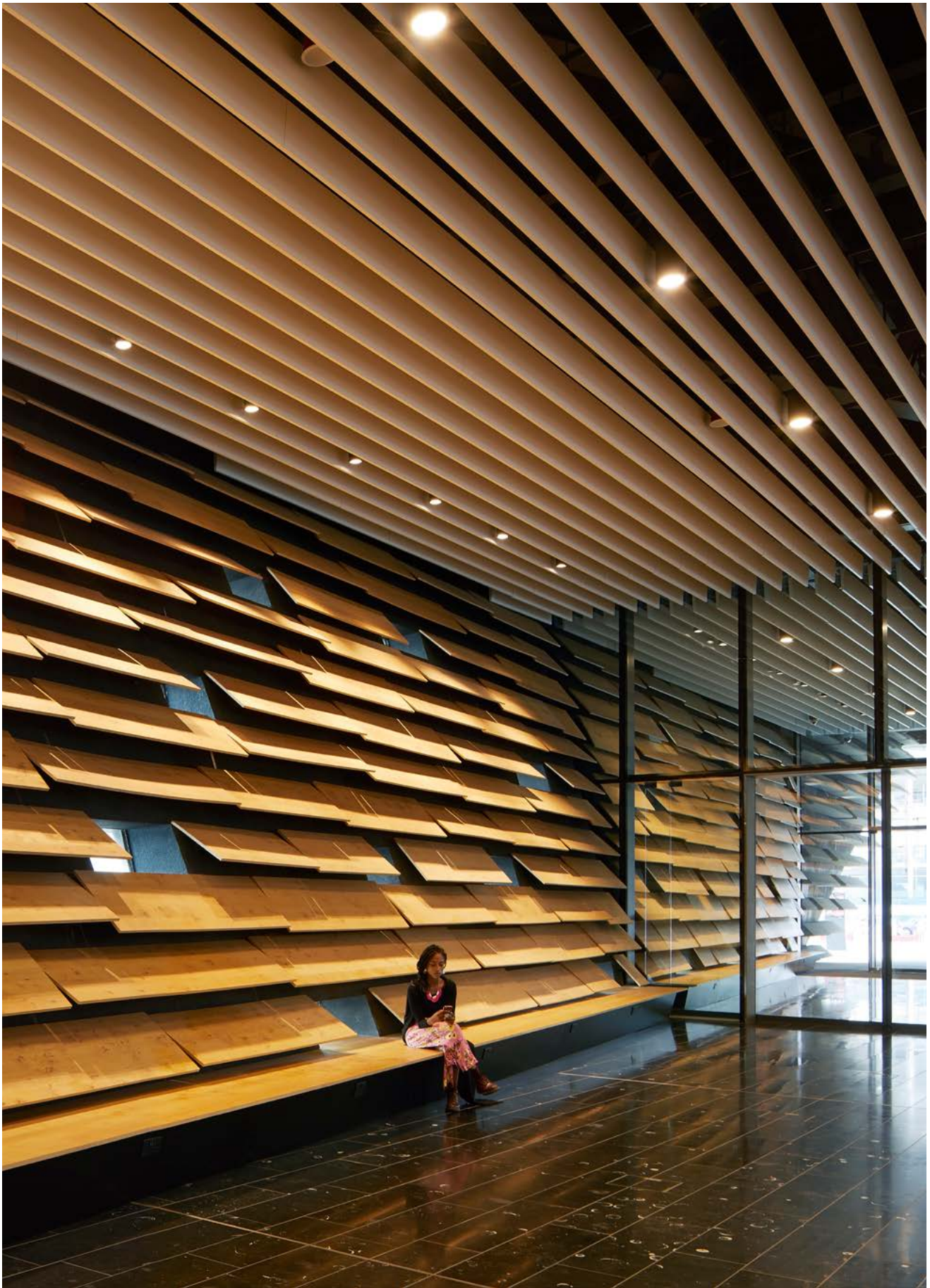
- 1 Emac Hanger
- 2 Slotted Emac Grid
- 3 SAS740 Hanger
- 4 SAS740 Linear Profile
- 5 SAS740 End Cap
- 6 TCP 180 Splice Plate
- 7 Wall Anchor
- 8 Acoustic Infill Tile (Optional)



Profiles Available*



***For further information on additional profiles please contact the technical design team.**

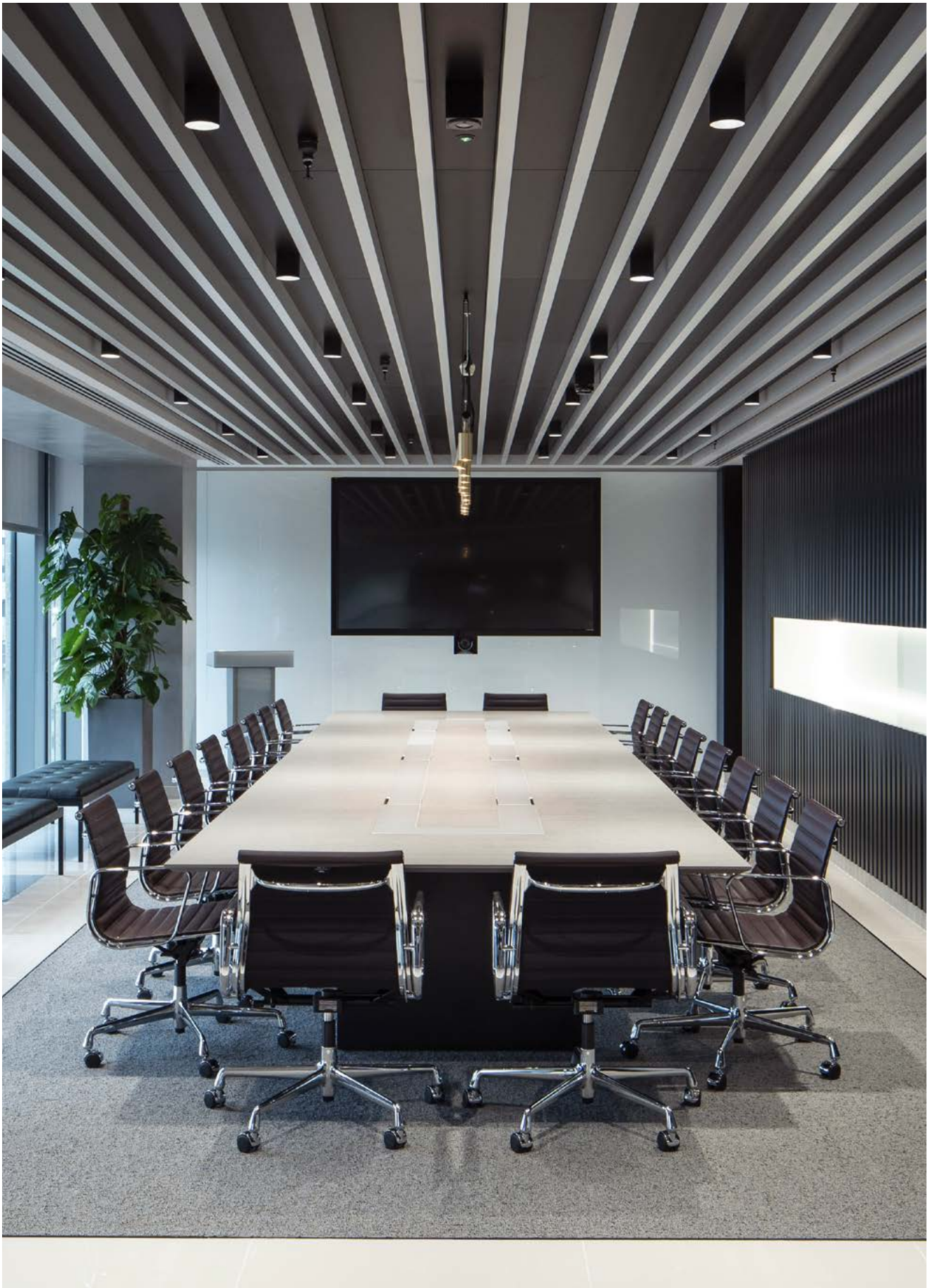


SAS**740**

V&A Museum

Location
Dundee, Scotland
Architect
**Kengo Kuma & Cre8
Architecture**

Contractor
**BAM Construction
Ltd: Scotland**
Purpose
Leisure



SAS**740**

Ocean Network Express

Location
London, UK
Architect
Cushman & Wakefield

Contractor
Morgan Lovell
Purpose
Commercial