

One Congress Street CASE STUDY





State Street Corporation were the anchor tenants at the new One Congress Street office tower, taking over 500,000 SF of office space to continue their 230-year history with Boston as their home. Developed by HYM Investment Group, with partners Carr Properties and National Real Estate Advisors, the building provides just under 980,000 SF of office space in the heart of downtown Boston.



SAS International worked closely with State Street Corporation's fit out architect, Corgan, to specify the SAS130 expanded metal mesh ceiling system in both a white and violet blue color, installed on a fully finished, color matched 9/16" tee grid.

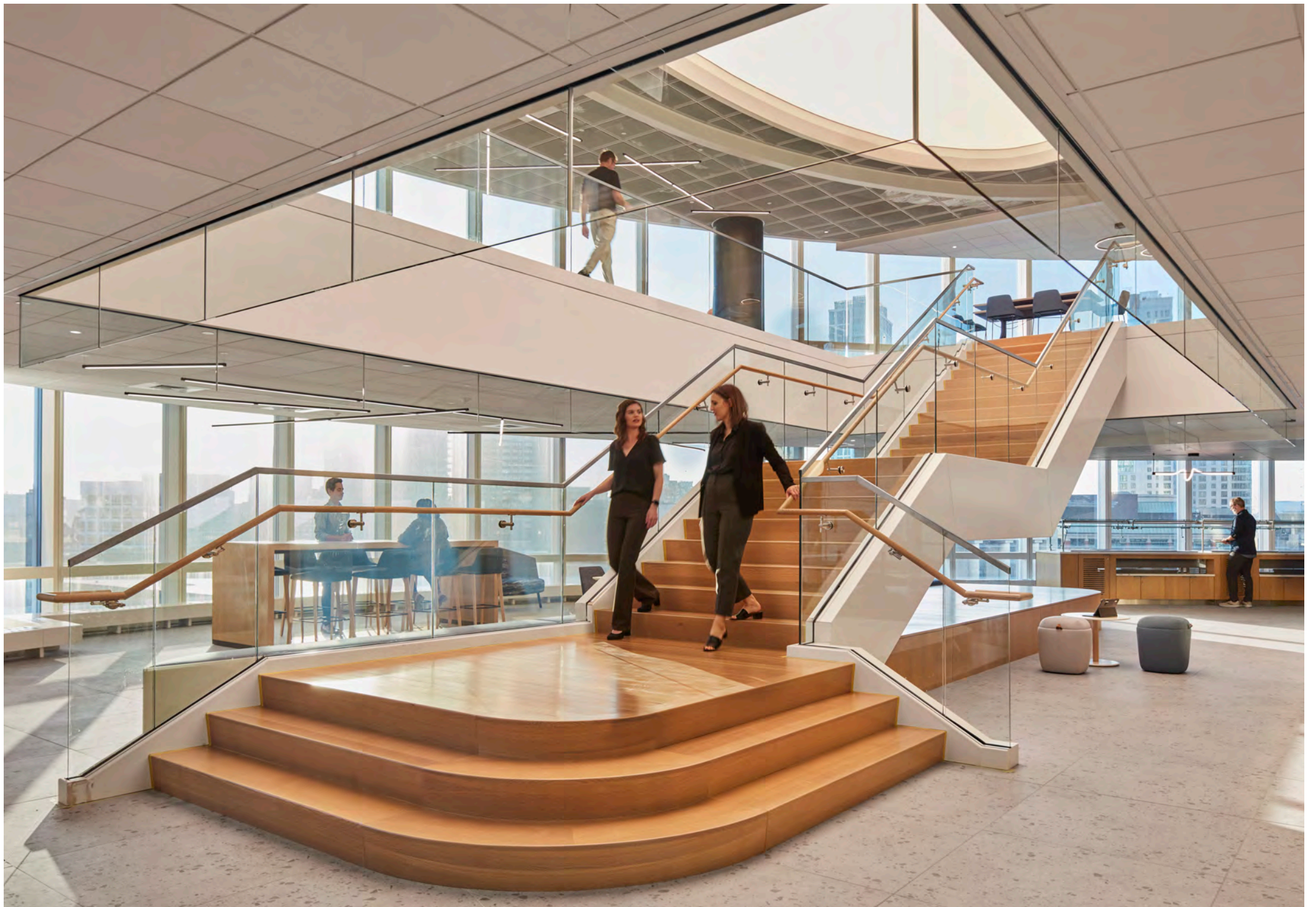


SAS320 concealed grid panels in matching colors were also specified to the 'Lounge' facilities within the project. The expanded metal mesh provides an open area of 72%, giving a subtle screening effect, whilst still allowing a filtered view of the services and structural soffit behind.



The geometry of the architect's design called for a number of elliptical perimeter conditions making use of SAS's extruded aluminum perimeter trims, pre-rolled to the required site radius and easily cut and spliced on site, thereby providing a seamless and color matched transition to adjoining finishes.







One Congress Street CASE STUDY



SAS International is a leading British manufacturer of quality metal ceilings and custom architectural metal work for over 50 years.

Installed in iconic, landmark buildings worldwide, SAS leads through innovative, cutting-edge design and technical acoustic expertise.

Success is built on continued investment in manufacturing and achieving value for clients through world-class engineered solutions.

Austin

823 Congress Avenue
Suite 300
Austin, TX 78701

sasint.us
info@sasint.us
+1 646 989 2672

New York

60 East 42nd Street
Suite 1255
New York, NY 10165

Project Information

Client: State Street Corporation

Architect: Corgan

Location: One Congress Street
Boston, MA

General Contractor: John Moriarty & Associates

Installers: H. Carr & Sons, Inc

Products: SAS 130 DML-72 Expanded Metal Mesh on 9/16" Tee grid, finished in RAL5000 Violet Blue and RAL9016 Traffic White & SAS 320 DML-72 Expanded Metal Mesh on concealed C profiles.

Completed: 2023

[Contact us for more details](#)