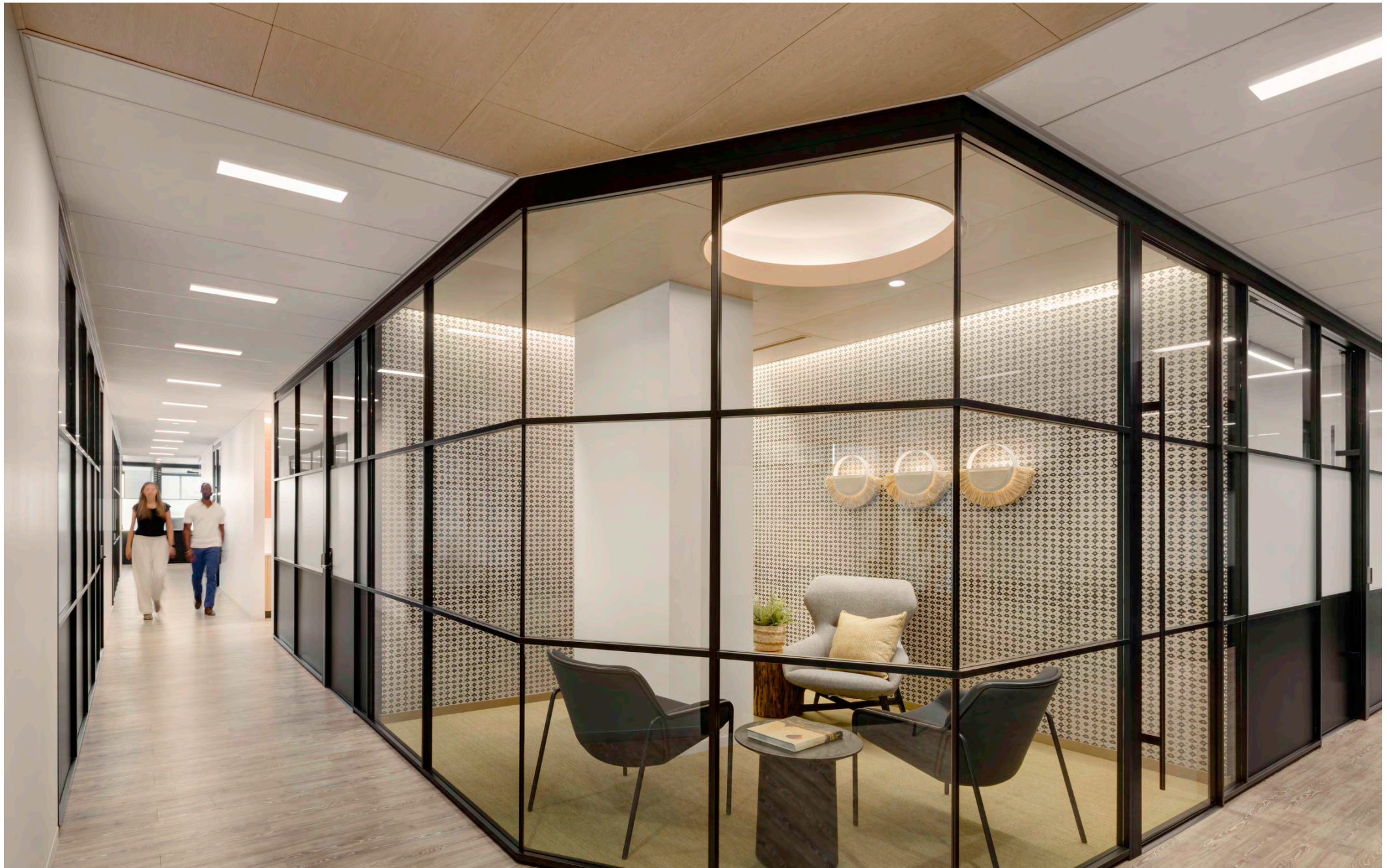


# Deloitte, Grand Cayman Island - *CASE STUDY*







A new office tower at 60 Nexus Way in the Grand Cayman Islands features an industrial style with island flair. One of the anchor tenants, Deloitte, worked with Gensler to incorporate a variety of different materials and textures including the SAS170 metal ceiling system.





The Gensler design created unique spaces for breakout rooms with the ceiling style overflowing into the common areas to create synergy between the spaces. The plan integrated the SAS170 metal ceiling system in a maple dye sublimated WoodTones finish to further enhance the biophilic design.

To control sound, the panels feature a ultramicro perforation creating the acoustical control the space required.





A key benefit of the SAS170 system is its versatility. The suspended ceiling system uses a convenient, hinge down torsion spring to easily access the ceiling void while seamlessly integrating with different ceiling styles.

# Deloitte, Grand Cayman Island – *CASE STUDY*



SAS International is a leading British manufacturer of quality metal ceilings and custom architectural metal work for over 50 years.

Installed in iconic, landmark buildings worldwide, SAS leads through innovative, cutting-edge design and technical acoustic expertise.

Success is built on continued investment in manufacturing and achieving value for clients through world-class engineered solutions.

**New York**  
60 East 42nd Street  
Suite 1255  
New York, NY 10165

sasint.us  
info@sasint.us  
+1 646 989 2672

## **Project Information**

*Client:* Deloitte

*Architect:* Gensler

*Location:* 60Nexus Way, Grand Cayman Island

*General Contractor:* Dart

*Products:* SAS170 in a dye sublimated  
WoodTones finish

*Completed:* 2024

**Contact us for more details**