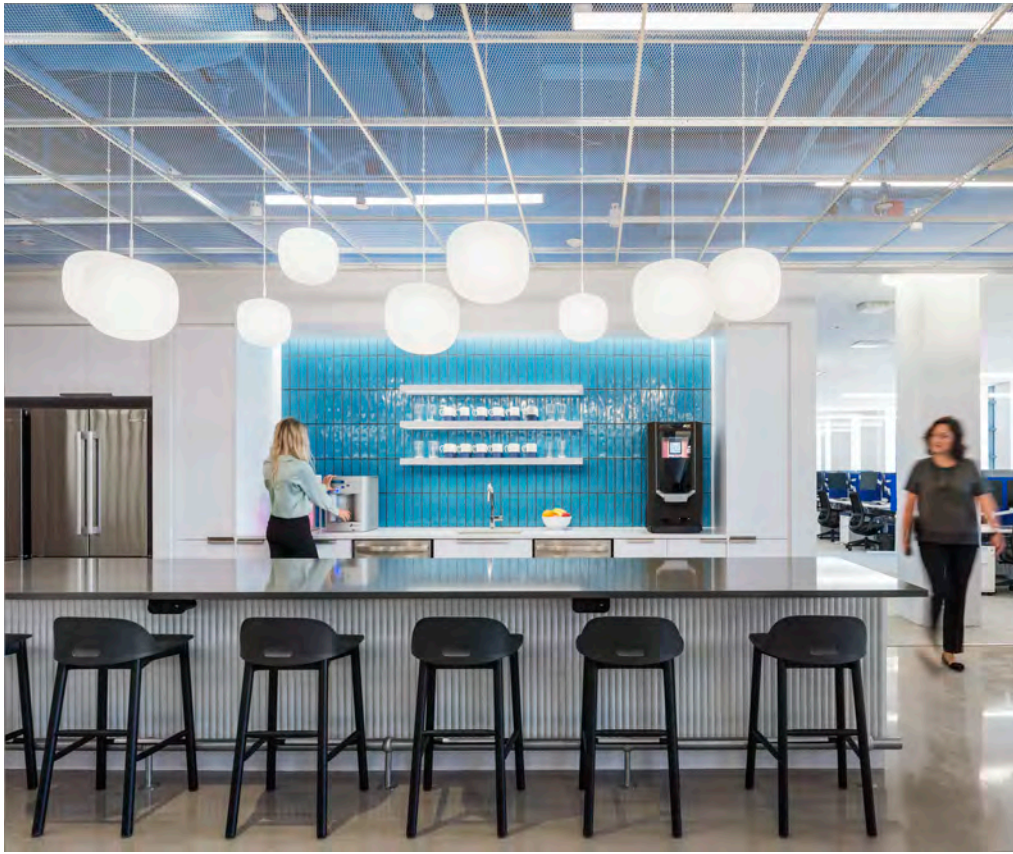


BlueRock Therapeutics - *CASE STUDY*



Located at the heart of Kendall Square, the dynamic spaces for BlueRock Therapeutics headquarters were designed to bring scientists and collaborators together and support cell and genetic research.





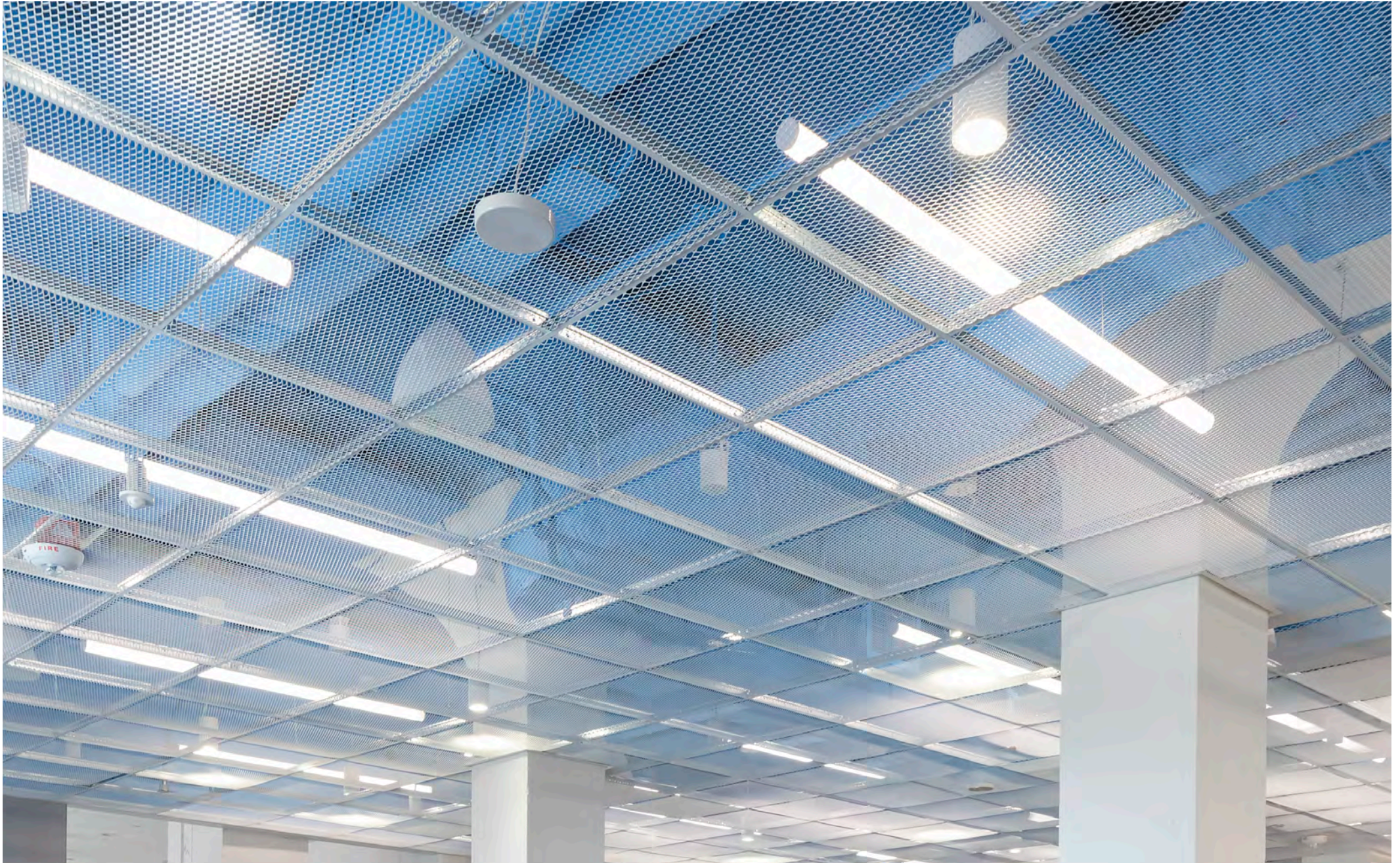
The café is specifically located in a central hub area designed for innovation and collaboration across office and laboratory areas. SAS expanded metal mesh ceilings were specified by project architect, Perkins + Will, to intentionally expose the existing structure and the historical brick building where the arrival spaces are located.

"The SAS team supported us all the way through the process, from materials exploration and design phases to construction documentation. They shared key details about the materials which made the final project result a very successful installation."

-Laura Duenas, Senior Associate, Perkins + Will



By positioning the lighting and other services above the ceiling, a clean and crisp finish is achieved within this cutting edge space.



BlueRock Therapeutics – CASE STUDY



SAS International is a leading British manufacturer of quality metal ceilings and custom architectural metal work for over 50 years.

Installed in iconic, landmark buildings worldwide, SAS leads through innovative, cutting-edge design and technical acoustic expertise.

Success is built on continued investment in manufacturing and achieving value for clients through world-class engineered solutions.

New York
60 East 42nd Street
Suite 1255
New York, NY 10165

sasint.us
info@sasint.us
+1 646 989 2672

Project Information

<i>Client:</i>	BlueRock Therapeutics
<i>Architect:</i>	Perkins+Will, Boston
<i>Location:</i>	Kendall Square, Cambridge, MA
<i>General Contractor:</i>	Turner Construction
<i>Installer:</i>	New England Finish Systems
<i>Products:</i>	SAS130 Expanded Metal Mesh System, SAS-DML72 Mesh installed on 9/16" Tee grid. Finished in RAL9010 white
<i>Completed:</i>	2022

Contact us for more details